

Pearson Edexcel Level 1/Level 2 GCSE (9–1)

June 2023

Period of sustained focus 10 hours

Paper
reference

1AD0/02

Art and Design

COMPONENT 2: Externally Set Assignment

You do not need any other materials.

Instructions to teachers

This paper should be given to the teacher-examiner AS SOON AS IT IS RECEIVED in the centre in order to plan for the candidates' preparatory study period. The paper will also be available on the Pearson Edexcel website each year in January.

The paper may be given to candidates any time after its release, at the centre's discretion. Candidates then undertake investigations and development under informal supervision. There is no prescribed time limit for the preparatory study period.

The final ten-hour period of sustained focus may take place over multiple sessions (a maximum of four within three consecutive weeks) and is conducted under formal supervision. The ten-hour period of sustained focus should not include teacher direction, demonstration, preparation of workspaces or materials, clearing or storage of work.

Instructions to candidates

This paper contains the theme and suggested starting points to be used in the preparatory study period and the period of sustained focus. You are advised to read the whole paper.

This paper contains the Externally Set Assignment for the following:

1AD0/02	Art, Craft and Design
1FA0/02	Art and Design (Fine Art)
1GC0/02	Art and Design (Graphic Communication)
1TE0/02	Art and Design (Textile Design)
1TD0/02	Art and Design (Three-dimensional Design)
1PY0/02	Art and Design (Photography)

Turn over ►

P69553A

©2023 Pearson Education Ltd.

1/1/1/1




Pearson

Candidate guidance

Your teacher will be able to teach, guide and support you as you prepare your personal response. You may also complete preparatory work without direct supervision.

The preparatory study period

The preparatory study period begins when you receive this paper and continues up until the start of the period of sustained focus.

You should develop your response to the theme in a personal and creative way, developing, refining and recording your ideas towards the final outcome(s).

The period of sustained focus

The period of sustained focus consists of **ten hours** working under supervised examination conditions in an appropriate studio setting. Teachers will be able to support you with matters such as working space, materials and equipment. However, teachers will not be able to give you feedback about your work in progress or suggest how you might improve or develop your outcome(s).

During the ten-hour period of sustained focus, you will produce your final outcome(s), based on your preparatory studies, in response to the Externally Set Assignment theme. The period of sustained focus may take place over more than one session. You will not be able to access any of your work outside of these sessions. Once the ten-hour supervised sustained focus period has ended, you will not be able to add to or alter any of your work.

Your teacher will inform you of the dates and times when you will complete your ten hours of unaided work for the Externally Set Assignment.

The Externally Set Assignment is worth 40% of the GCSE.

Exploring and developing the theme

Your work for this Externally Set Assignment should be based on the theme given in this paper.

The theme this year is:

Lock

You should discuss your ideas with your teacher before deciding how to respond to the theme. Your work will be marked according to how well you have shown evidence of the four Assessment Objectives.

The four Assessment Objectives are:

- develop ideas through investigations, demonstrating critical understanding of sources
- refine work by exploring ideas, selecting and experimenting with appropriate media, materials, techniques and processes
- record ideas, observations and insights relevant to intentions as work progresses
- present a personal and meaningful response that realises intentions and demonstrates understanding of visual language.

You should use the knowledge, skills and understanding you have learnt to show your progression along your creative journey.

Suggested starting points

The starting points on the following pages are suggestions to help you think about possible ideas, ways of working and your personal creative approach to this year's theme. You should read through **the whole paper** before you start your preparatory work, as any section may provide you with ideas.

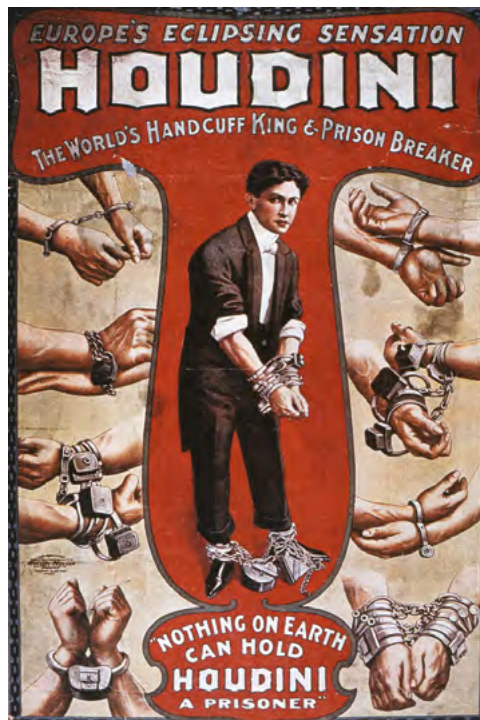
You may prefer to use a starting point of your own and explore and respond to other artists, designers and/or craft workers, and references to help you develop your response to the theme '**Lock**'.

Further contextual references can be found at:

https://qualifications.pearson.com/content/dam/pdf/GCSE/Art%20and%20Design/2016/teaching-and-learning-materials/GCSE16_ARTDES_CR_OCT15.pdf

Lock – people

Harry Houdini, escape artist, illusionist and performer was famous for unbelievable escape acts. He was even able to escape from a padlocked box when handcuffed. The poster advertises his fantastic performances.



American School

Poster advertising a performance by Houdini
lithograph

Vincent van Gogh's painting shows the monotony of imprisonment and having no freedom.



Vincent van Gogh

The Prisoners' Round
painting

Claustrophobia creates a feeling of discomfort or discontent caused by being in a restrictive situation or environment.

Some couples in lasting relationships choose to be united through the act of wedlock. The painting by **Jan van Eyck** expresses the symbolism of fifteenth century marital roles.



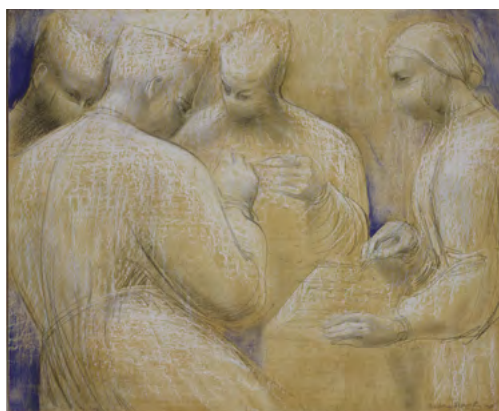
Jan van Eyck
The Arnolfini Portrait
painting



Antony Gormley
Shift II, 2000
sculpture

Antony Gormley's sculpture might express how we could feel when restricted by our thoughts and physical space.

In the drawing by **Barbara Hepworth** a group of surgeons gathers round a patient to perform a surgical procedure. They are all wearing masks to prevent infection.



Barbara Hepworth
Surgery, circa 1949
pencil and oil on paper

Two people are locked together in a tight embrace.

Here are some other suggestions that may stimulate your ideas:

- secure
- stuck
- protect
- together
- united

Using one of the above starting points, or starting points of your own, develop your ideas to produce a personal response to the theme '**Lock**'.

Lock – human-made

Artists, designers and craft workers are often inspired to create work using found objects. Padlocks are secured to metal railings by couples who want to express their love for each other.



Marcello Mencarini
*Paris, 5th arrondissement, padlocks
on the Pont de l'Archevêché
(Archbishop's bridge)
photograph*



Marcel Breuer
*Isokon Long Chair
furniture design*

Marcel Breuer's long chair is made from wood, moulded and joined together to create a functional piece of furniture.

Parts of a building are interlocked creating a decorative pattern.



*Interlocking Arch Motif at Aljaferia Palace, Zaragoza, Spain, 2007
photograph*

Artists, designers and craft workers are often motivated to create works of art for locking away precious objects. This ancient Egyptian coffer was made to lock away valuable treasures.



Egyptian 18th Dynasty (c1567–1320 BC) / Egyptian
Coffer from the Tomb of Tutankhamun
three-dimensional design

Lock gates on rivers and canals enable boats to travel up and down hills. The painting by **Simon Palmer** depicts a boat about to travel up a slight gradient in the landscape through a series of locks.



Simon Palmer
View from a Canal Bridge
painting

Dreadlocks are formed by locking or braiding hair.

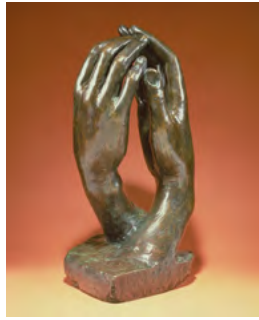
Here are some other suggestions that may stimulate your ideas:

- shut
- close
- bolt
- gated
- glued

Using one of the above starting points, or starting points of your own, develop your ideas to produce a personal response to the theme '**Lock**'.

Lock – environment

In this sculpture by **Auguste Rodin**, there is a hidden secret locked between the hands.



Auguste Rodin
The Secret
sculpture

The painting by **Penny Warden** could depict people 'locking', a style of funk dance. The name is based on the concept of *locking* movements, which basically means freezing from a fast movement and 'locking' in a certain position. This is held for a short time and then the dance continues at the same speed as before.



Penny Warden
Jump, 2008
painting

A document is encrypted to lock in secret information, preventing access from unauthorised personnel.

Artists, designers and craft workers are sometimes inspired by camouflage. In the print by **Nat Morley** the chameleon is locked inside the foliage pattern making it difficult to see.



Nat Morley
Chameleon
print

The collage by **Kirstie Adamson** depicts a child blowing through a bubble wand. The air that is blown through the wand is locked inside a film of soapy water creating spheres with iridescent surfaces.



Kirstie Adamson

Bubbles
collage

Locked inside the barcode in the photograph by **Stefano Bianchetti** is unique information about a product on sale.



Stefano Bianchetti

Consumer society symbolised by a barcode
photograph

Here are some other suggestions that may stimulate your ideas:

- prison
- vacuum
- darkness
- underground
- deep

Using one of the above starting points, or starting points of your own, develop your ideas to produce a personal response to the theme '**Lock**'.

Lock – natural world

William Blamire Young has painted a study of the sea surrounded by land. Landlocked water can motivate artists, designers and craft workers to create artwork.



William Blamire Young
A Land-locked Sea (Sydney Harbour)
painting

The painting by **Mark Adlington** depicts two wolves locked together in an act of aggression.



Mark Adlington
Two Wolves
painting

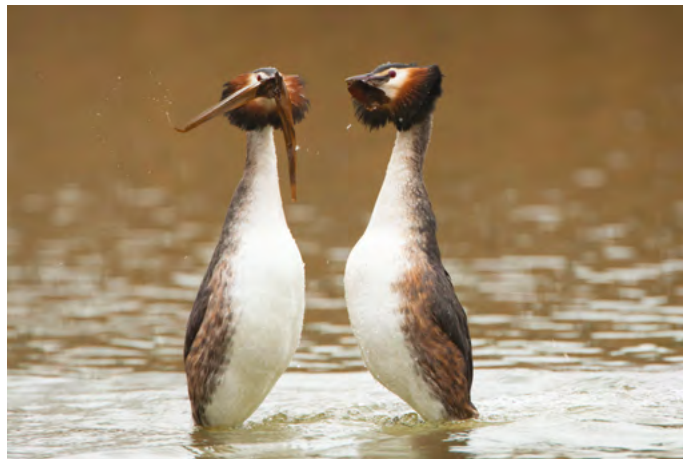
Some animals hibernate during the winter months, locked away from the cold and long dark nights.

Creatures set their own traps to capture unsuspecting prey. The illustration by **Arthur Rackham** depicts a fly trapped in a spider's web.



Arthur Rackham
The Spider and the Fly
illustration

A pair of great crested grebes come together to perform an elegant ritual.



Jake Stephen
Great Crested Grebe courtship dance
photograph

Plants produce seeds locked inside a protective coating.

Here are some other suggestions that may stimulate your ideas:

- capture
- release
- hooked
- protected
- sealed

Using one of the above starting points, or starting points of your own, develop your ideas to produce a personal response to the theme '**Lock**'.

Acknowledgements

Peter Newark American Pictures / Bridgeman Images

Bridgeman Images

Bridgeman Images

Photo © Christie's Images / Bridgeman Images

Photo © Agnew's, London / Bridgeman Images

Bridgeman Images

© Bonhams, London, UK / Bridgeman Images

© Samuel Magal, Sites & Photos Ltd. / Bridgeman

Bridgeman Images

Bridgeman Images

Bridgeman Images

© Penny Warden / Bridgeman Images

© Nat Morley / Bridgeman Images

© Kirstie Adamson / Bridgeman Images

Stefano Bianchetti / Bridgeman Images

© Christie's Images / Bridgeman Images

© Mark Adlington / Bridgeman Images

Bridgeman Images

Jake Stephen / Alamy Stock Photo